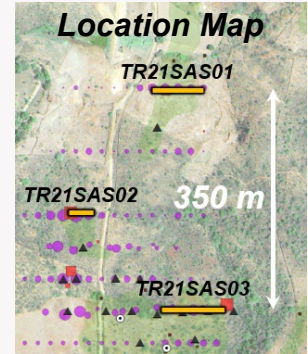


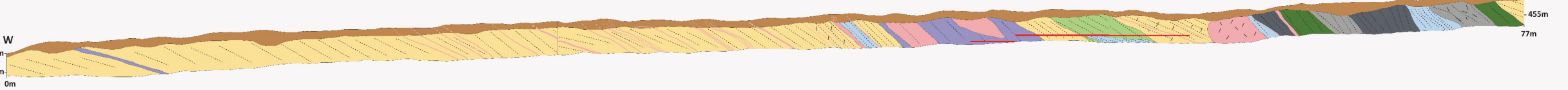
Figure 3: Trench Cross Sections for Santo Amaro South Target



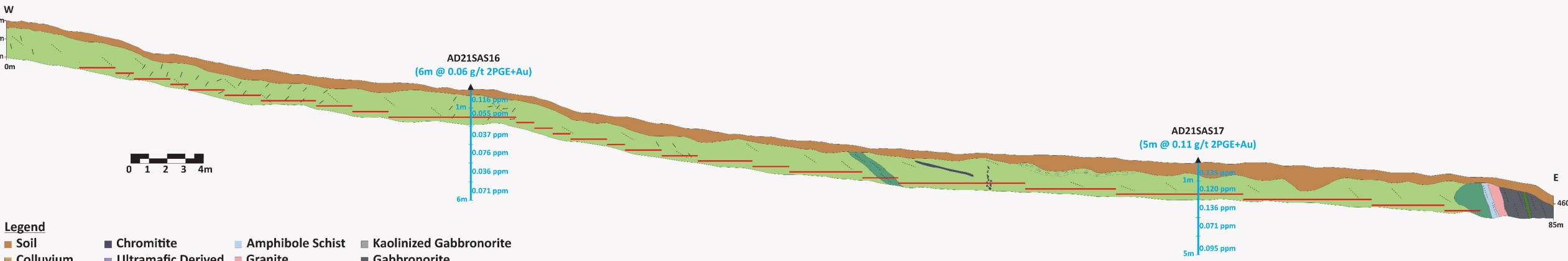
TR21SAS01
 20m @ 1.06 g/t 2PGE+Au from 18m
 within 61m @ 0.43 g/t 2PGE+Au from 18m



TR21SAS02
 11.10m @ 0.35 g/t 2PGE+Au from 49m



TR21SAS03
 77m @ 0.20 g/t 2PGE+Au from 4m
 incl. 44m @ 0.25 g/t 2PGE+Au from 37m and 4m @ 0.61 g/t 2PGE+Au from 53m



- Legend**
- Soil
 - Chromitite
 - Amphibole Schist
 - Kaolinized Gabbro-norite
 - Colluvium
 - Ultramafic Derived
 - Granite
 - Gabbro-norite
 - Ultramafic
 - Serpentinite
 - Amphibolite
 - Gneiss
- Granitic Veins
 Foliation
 Fracture
 Mineralized interval